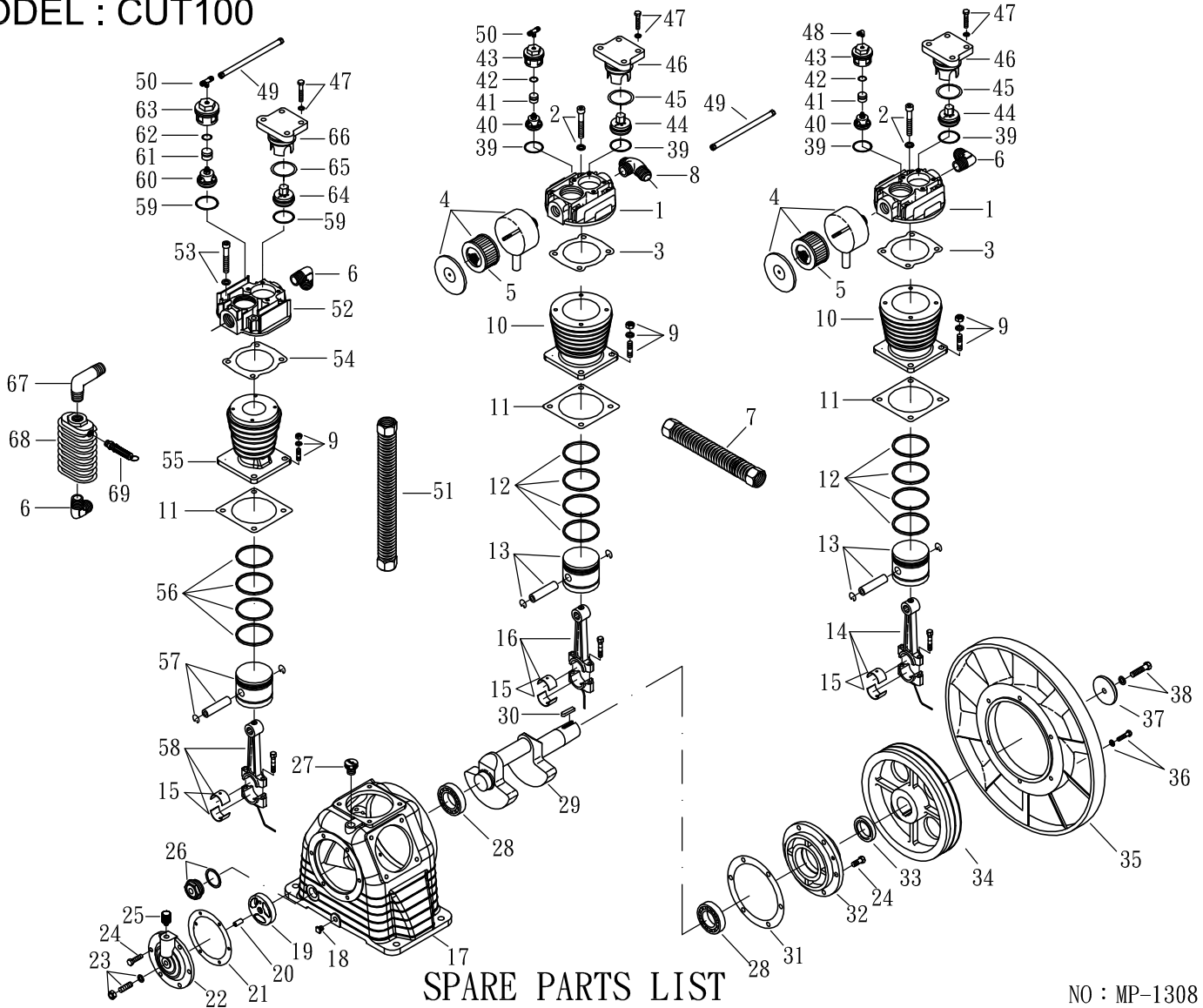


# MODEL : CUT100



## SPARE PARTS LIST

NO : MP-1308

REF. NO.	DESCRIPTION	PART NO.	QTY.	REF. NO.	DESCRIPTION	PART NO.	QTY.
1	Cylinder head	3101049	2	36	Hexagon bolt set	3B00-SM08*035AV	6
2	Allen bolt set	3B01-M12*065V	8	37	Plate washer	2B34-13*75*13	1
3	Cylinder head gasket	2G01-008C	2	38	Hexagon bolt set	3B00-SM12*050V	1
4	Air filter	2140011	2	39	Inlet/Exhaust washer	2B31-002	4
5	Filter element	2142009	2	40	Inlet valve assembly	3B12-PU75	2
6	Exhaust elbow	2N06-10T10H	3	41	Unloading piston	2113010	2
7	Exhaust tube set	3B2-10*245	1	42	O-ring	2N52-P21V	2
8	Exhaust 3-way pipe	2N09-10H10T10H3	1	43	Inlet valve holder	3110010	2
9	Double head bolt set	3B11-003-A	12	44	Exhaust valve assembly	3B11-HL75	2
10	Cylinder	3201110	2	45	O-ring	2N52-G55V	2
11	Cylinder gasket	2G04-023	3	46	Exhaust press plate	3126005	2
12	Piston ring set	3B32-CK7595	2	47	Allen bolt set	3B00-SM08*030V	12
13	Piston set	3B31-CK7595	2	48	Unloading elbow	2N16-C01TW02M	1
14	Rod set	3B33-CKA071	1	49	Unloading tube set	3B2-02*475C	2
15	Rod bush(2 pieces)	2316001-B	3	50	Unloading 3-way pipe	2N17-CW0201TW2M	2
16	Rod set	3B33-CKA065	1	51	Exhaust tube set	3B2-10*580	1
17	Crankcase	3301114	1	52	Cylinder head	3101048	1
18	Oil draining plug	2N33-003	1	53	Allen bolt set	3B01-M10*055V	4
19	Thrust block	3312007	1	54	Cylinder head gasket	2G01-007C	1
20	Pin	2N41-003	1	55	Cylinder	3201114	1
21	Front bearing seat gasket	2G05-009	1	56	Piston ring set	3B32-CTA070	1
22	Front bearing seat	3309012	1	57	Piston set	3B31-CTA070	1
23	Bolt	3B07-SM16*40-A	1	58	Rod set	3B33-CTA071	1
24	Hexagon bolt	2B00-SM10*025	12	59	Inlet/Exhaust washer	2B31-001	2
25	Breathing cover	2321008	1	60	Inlet valve assembly	3B12-PU23	1
26	Oil sight gauge set	2303023B	1	61	Unloading piston	2113009	1
27	Oil filling plug set	2319004A	1	62	O-ring	2N52-P18V	1
28	Bearing	2N35-32209	2	63	Inlet valve assembly	3110008	1
29	Crankshaft & balancer	3304096	1	64	Exhaust valve assembly	3B11-NPP23	1
30	Pulley key	2N47-10*8*40	1	65	O-ring	2N52-G45V	1
31	Rear bearing seat gasket	2G06-023	1	66	Exhaust press plate	3126004	1
32	Rear bearing seat	3311033	1	67	Exhaust elbow	2N06-10T10T92	1
33	Oil seal	2N50-TC43*68*12	1	68	Spare tank	3125002	1
34	Pulley	3PBF-115B243	1	69	Pressure relief valve	2406020A	1
35	Fly wheel	3PBF-516*228	1				