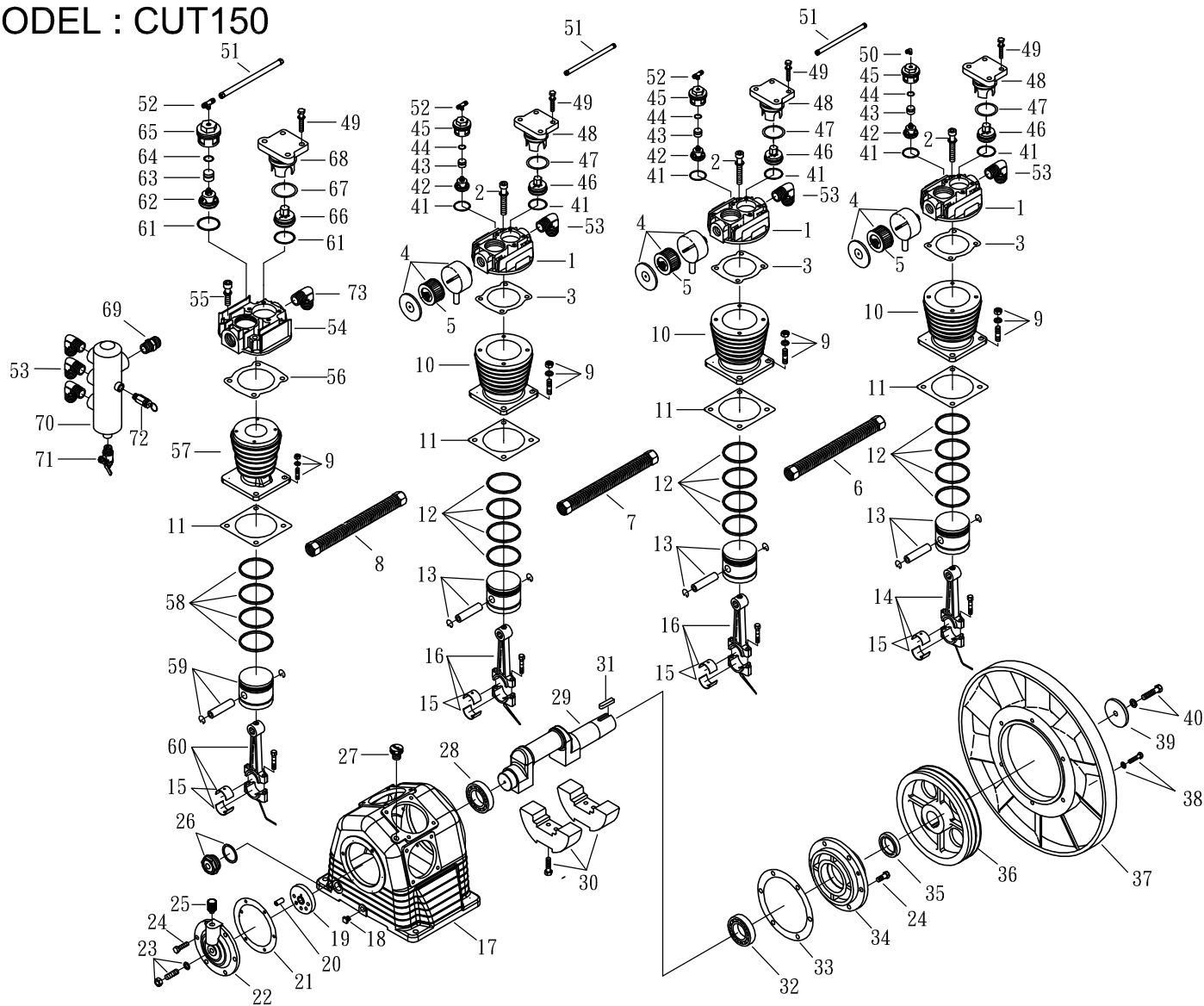


MODEL : CUT150



SPARE PARTS LIST

NO : MP-1308

| REF. NO. | DESCRIPTION | PART NO. | QTY. | REF. NO. | DESCRIPTION | PART NO. | QTY. |
|----------|---------------------------|-----------------|------|----------|------------------------|-----------------|------|
| 1 | Cylinder head | 3101049 | 3 | 38 | Hexagon bolt set | 3B00-SM08*035AV | 6 |
| 2 | Allen bolt set | 3B01-M12*065V | 12 | 39 | Plate washer | 2B34-13*75*13 | 1 |
| 3 | Cylinder head gasket | 2G01-008C | 3 | 40 | Hexagon bolt set | 3B00-SM12*050V | 1 |
| 4 | Air filter set | 2140011 | 3 | 41 | Inlet/Exhaust washer | 2B31-002 | 6 |
| 5 | Filter element | 2142009 | 3 | 42 | Inlet valve assembly | 3B12-PU75 | 3 |
| 6 | Exhaust tube set | 3B2-06*930 | 1 | 43 | Unloading piston | 2113010 | 3 |
| 7 | Exhaust tube set | 3B2-06*750 | 1 | 44 | O-ring | 2N52-P21V | 3 |
| 8 | Exhaust tube set | 3B2-06*570 | 1 | 45 | Inlet valve holder | 3110010 | 3 |
| 9 | Double head screw set | 3B11-003-A | 16 | 46 | Exhaust valve assembly | 3B11-HL75 | 3 |
| 10 | Cylinder | 3201110 | 3 | 47 | O-ring | 2N52-G55V | 3 |
| 11 | Cylinder gasket | 2G04-023 | 4 | 48 | Exhaust press plate | 3126005 | 3 |
| 12 | Piston ring set | 3B32-CK7595 | 3 | 49 | Allen bolt set | 3B00-SM08*030V | 16 |
| 13 | Piston set | 3B31-CK7595 | 3 | 50 | Unloading elbow | 2N16-C01TW02M | 1 |
| 14 | Rod set | 3B33-CKA581 | 1 | 51 | Unloading tube set | 3B2-02*395C | 3 |
| 15 | Rod bush(2 pieces) | 2316008-B | 4 | 52 | Unloading 3-way pipe | 2N17-CW0201TW2M | 3 |
| 16 | Rod set | 3B33-CKA571 | 2 | 53 | Exhaust elbow | 2N06-06T06H | 6 |
| 17 | Crankcase | 3301120 | 1 | 54 | Cylinder head | 3101050 | 1 |
| 18 | Oil draining plug | 2N33-003 | 1 | 55 | Allen bolt set | 3B01-M10*060V | 4 |
| 19 | Thrust block | 3312007 | 1 | 56 | Cylinder head gasket | 2G01-007C | 1 |
| 20 | Pin | 2N41-003 | 1 | 57 | Cylinder | 3201112 | 1 |
| 21 | Front bearing seat gasket | 2G05-009 | 1 | 58 | Piston ring set | 3B32-CK5080 | 1 |
| 22 | Front bearing seat | 3309012 | 1 | 59 | Piston set | 3B31-CTA580 | 1 |
| 23 | Bolt set | 3B07-SM16*40-A | 1 | 60 | Rod set | 3B33-CTA581 | 1 |
| 24 | Hexagon bolt | 2B00-SM10*025 | 12 | 61 | Inlet/Exhaust washer | 2B31-001 | 2 |
| 25 | Breathing cover | 2321008 | 1 | 62 | Inlet valve assembly | 3B12-PU23 | 1 |
| 26 | Oil sight gauge set | 2303023B | 1 | 63 | Unloading piston | 2113009 | 1 |
| 27 | Oil filling plug set | 2319004A | 1 | 64 | O-Ring | 2N52-P18V | 1 |
| 28 | Bearing | 2N35-32209 | 1 | 65 | Inlet valve assembly | 3110008 | 1 |
| 29 | Crankshaft & balancer | 3304099 | 1 | 66 | Exhaust valva assembly | 3B11-NPP23 | 1 |
| 30 | Balancer set | 3304058-A | 1 | 67 | O-ring | 2N52-G45V | 1 |
| 31 | Pulley key | 2N47-10*8*40 | 1 | 68 | Exhaust press plate | 3126004 | 1 |
| 32 | Bearing | 2N35-32210 | 1 | 69 | Nipple | 2N01-10T10T | 1 |
| 33 | Rear bearing seat gasket | 2G06-015 | 1 | 70 | Spare tank | 3125011 | 1 |
| 34 | Rear bearing seat | 3311024 | 1 | 71 | Ball valve | 2413010 | 1 |
| 35 | Oil seal | 2N50-TC50*72*12 | 1 | 72 | Pressure relief valve | 2406020A | 1 |
| 36 | Pulley | 3PBF-115B350 | 1 | 73 | Exhaust elbow | 2N06-10T10H | 1 |
| 37 | Fly wheel | 3PBF-516*228 | 1 | | | | |